

SPECIFICATIONS

- Current Rating: 5A
- Insulator: High Temp Plastic UL94V-0
- Contact: Copper Alloy
- Shell: Stainless Steel
- Contact Resistance: 30mohm max
- Withstanding: 100V RMS
- Insulation Resistance: 100Mohm min
- Mating Force: 5'20 N
- Unmating Force: 8'20 N
- Durability: 10000 cycles
- Terminal Contact: Gold over Nickel
- Shell: 50u" Nickel
- Operating Temp: -40C to +85C

Series	Type	Style	Ports/Gender/Cont/ Mount	Housing Material	Shell Plating	Contact Plating
CUSB	C	SA3113	1F24RT	L	N	GD50
USB Connector	Type C 3.1	See Drawing	Single Port Female 24 Contacts DIP Type	LCP	Nickel	50µ Gold

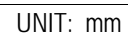
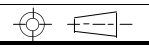
RoHS compliant

Rev.	Description	Date	Approved	Drawing	Name	Date
				Approved	Howard	3/27/15
				Checked	Lizzy	3/27/15
				Drawn	Tina	3/27/15
				0.0 ± 0.35	0.00 ± 0.20	Angles ± 3'

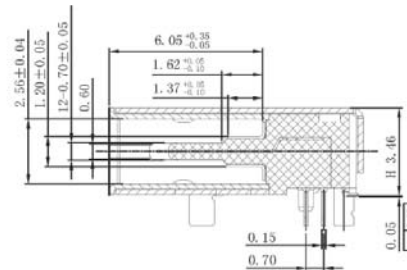
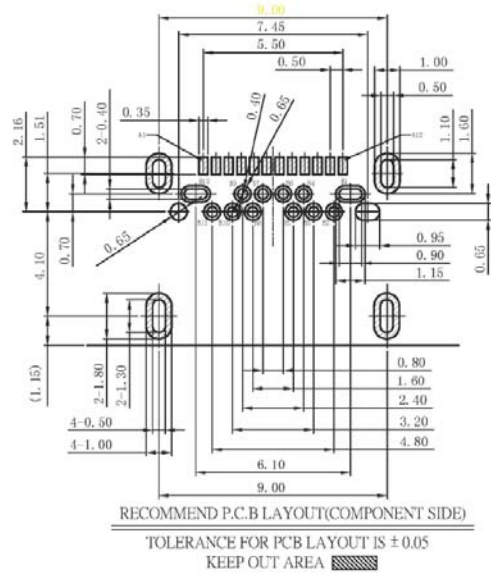
Central Components Manufacturing
 440 Lincoln Blvd., Middlesex, New Jersey 08846
 Phone 732 469-5720 888 288-5152 Fax 732 469-1919

Part No.: **CUSB-C-SA3113-1F24RT-L-N-GD50**

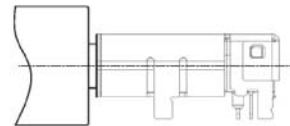
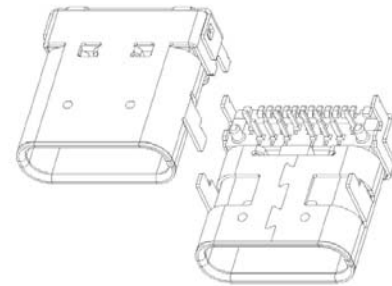
Description: USB Type C 3.1 Single Port Female 3.45mm DIP Type



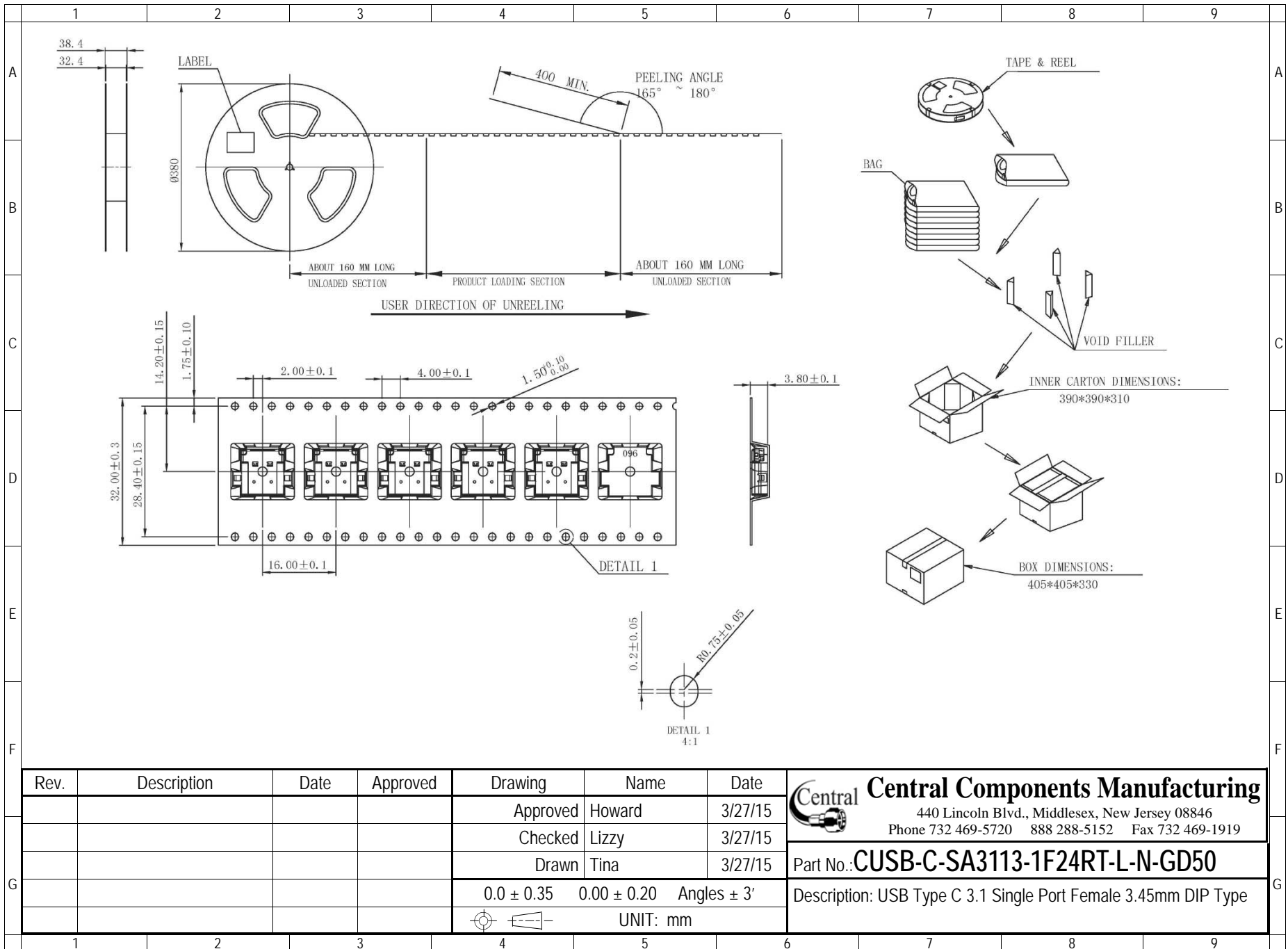
UNIT: mm



SECTION A-A



Rev.	Description	Date	Approved	Drawing	Name	Date
				Approved	Howard	3/27/15
				Checked	Lizzy	3/27/15
				Drawn	Tina	3/27/15
				0.0 ± 0.35	0.00 ± 0.20	Angles ± 3'
						UNIT: mm
Central Components Manufacturing 440 Lincoln Blvd., Middlesex, New Jersey 08846 Phone 732 469-5720 888 288-5152 Fax 732 469-1919						
Part No.: CUSB-C-SA3113-1F24RT-L-N-GD50						
Description: USB Type C 3.1 Single Port Female 3.45mm DIP Type						



Rev.	Description	Date	Approved	Drawing	Name	Date
				Approved	Howard	3/27/15
				Checked	Lizzy	3/27/15
				Drawn	Tina	3/27/15
				0.0 ± 0.35	0.00 ± 0.20	Angles ± 3'
				UNIT: mm		

Central Components Manufacturing
 440 Lincoln Blvd., Middlesex, New Jersey 08846
 Phone 732 469-5720 888 288-5152 Fax 732 469-1919

Part No.: **CUSB-C-SA3113-1F24RT-L-N-GD50**

Description: USB Type C 3.1 Single Port Female 3.45mm DIP Type